

# ANNUAL

## PRESENTATION

---



Global  
Operation



Assertive  
Process



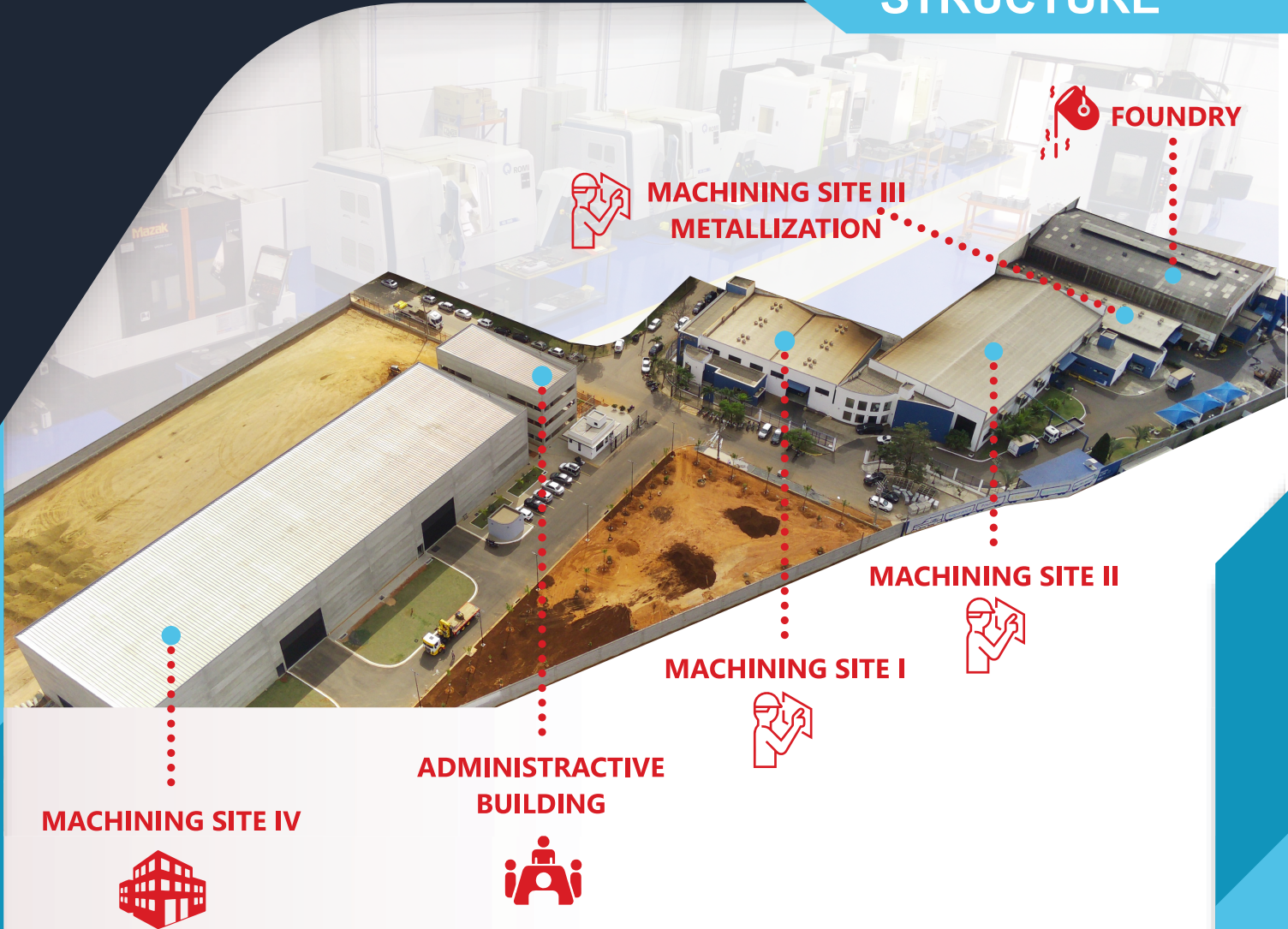
Special  
Projects

# SINCE 1973

BUILDING OF SUCCESS

contact:

## STRUCTURE



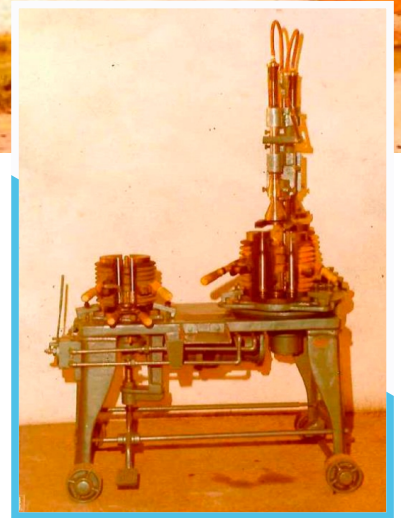
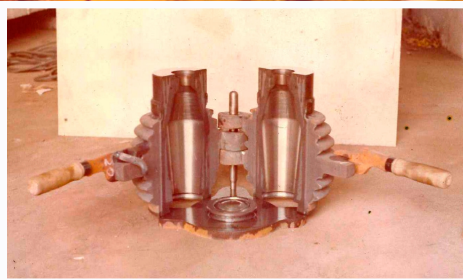
We can proudly affirm that Pecsil works with a wide and modern structure, based on a 10.000 m<sup>2</sup> site.

After years of dedication, hard work and countless achievements, Pecsil is now ongoing a meaningful and well-structured growth. Our large-scale investments allow us to exceptionally meet market demands, both national and international. We are committed to offer products and services of the highest quality, providing solutions that surpasses our clients' expectations. We aim to keep expanding our operations, contributing to the market we're inserted.

## MOLDS FOR GLASS



contact:



#### SINCE 1973

Founded on November 1973, already working with the manufacturing molds for glass containers.



#### GROWTH: 2006

Manufacturing demand was increasing and, therefore, it was necessary to build a new factory, which, in its beginning, relied solely on mechanical processes.



#### FOUNDRY

Quality demands imposed a new necessity to Pecsil: its own foundry, in order to deliver better quality in our products and in a shorter delivery time. In 2009, Pecsil melted its first metal and bronze alloys.



#### NEW FACTORY

We opened in 2022 our new factory, expanding our capability of meeting new market demands, inside and abroad Brazil. For that, Pecsil keeps investing in technology and increasing its manufacturing processes.



contact:



Having its own foundry brings a diversity of meaningful benefits to the manufacturing process and product delivery time, aside from increasing the quality of our products.

Let's highlight a fill of its main benefits:

Total control over the production process, cost reduction, agility and flexibility, less dependency on international suppliers, product quality control, assurance over intellectual property, wider innovation capabilities, integration with other production steps.



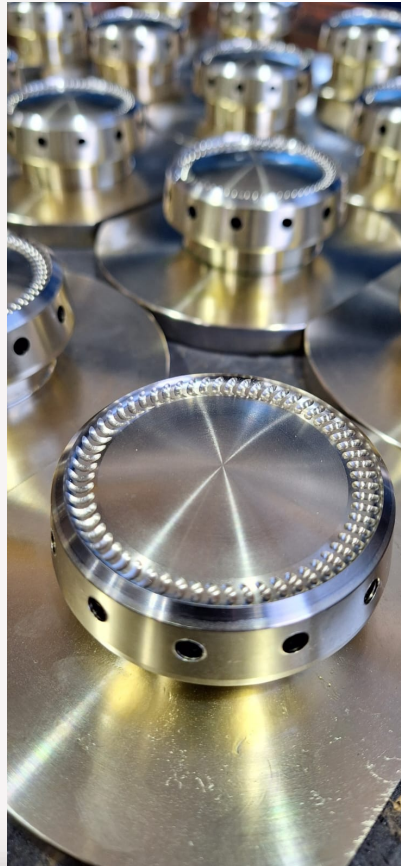
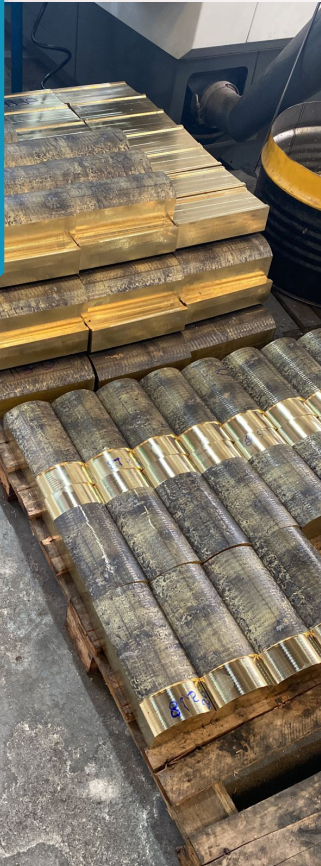
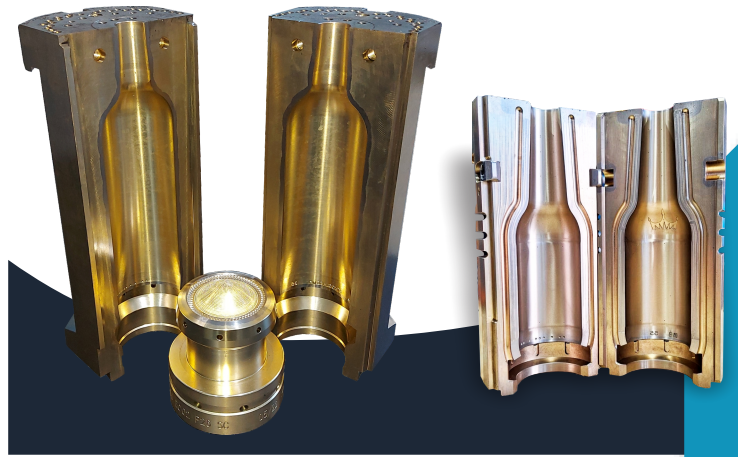
contact:



**Why is bronze, merged with composition XX, the ideal alloy for the glazing industry and the high production level industry as a whole?**

It allows for a setup reduction, as well as a maintenance reduction, entailing, therefore, a more profitable production in comparison with iron alloys.

Currently, Pecsil offers bronze products for: 750 ml; 330 ml; 275 ml; and 210 ml.



contact:



**We invest on precision machining with top-notch technology.**

On the verge of its industry, our company is synonymous with excellency in precision machining. Employing only the latest generation equipment, our commitment to quality and precision is unswerving, reaching impressive levels of less than 0,0005 mm.



contact:



55+ 11 4013 4870



contato@pecsil.com.br



Rua Francisco Faría, 243 - Bairro Progresso, Itu/SP

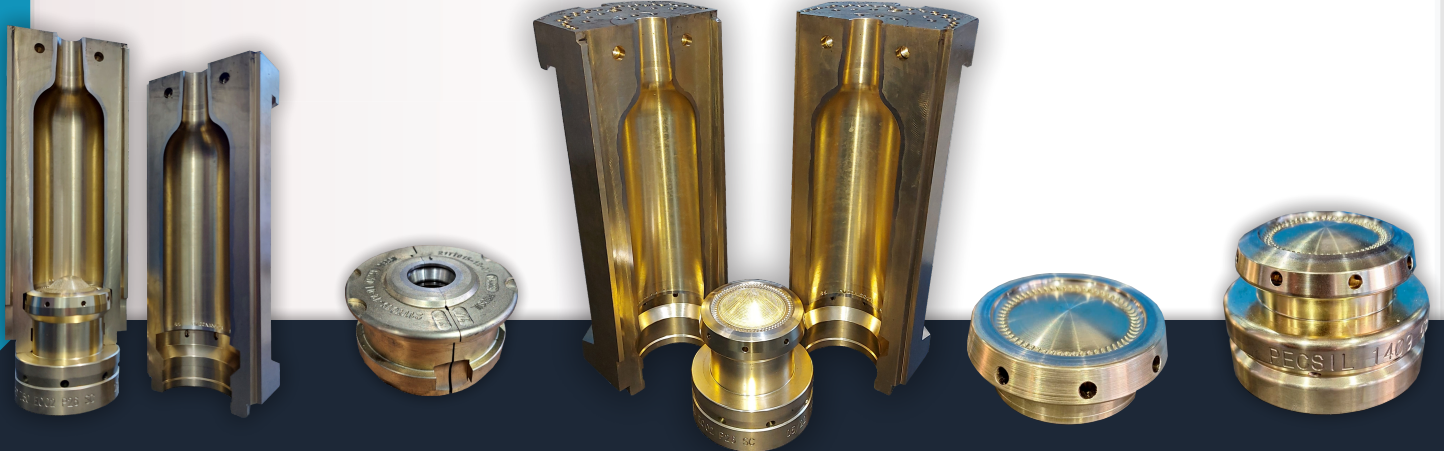


www.pecsil.com.br



Delivering molds with excellency

We are specialized in the manufacturing of glass molds, serving a wide range of segments, including bottles for beer, juices, perfumes, water and more. Our company excels due to the quality of our molds and the precision which they are made with, attending the specific needs of each client.



contact:



With an ongoing commitment to innovation, we have transformed the way the industry views machining. By implementing state-of-the-art equipment and advanced automation, we optimize the accuracy, efficiency and quality of our manufacturing processes.

**Mazak**



**HELLER**



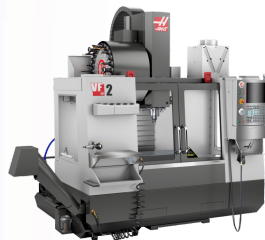
**GROB**



**ROMI**



**HANAS**



**Hartford**  
*innovation*



contact:



By implementing an Enterprise Resource Planning (ERP) and upgrading our production inspections and recordings techniques, we are able to compile all necessary data to keep improving our production capability.

By keeping improving our investments in more technological and modern machinery, we are meeting more rigorous demands without compromising the quality of our products, since we are able to judiciously analyze our factory's processes as a whole.

### **Quality Policies**

Pecsil strives to achieve continuous improvement in regards of Quality Management, making sure that our client's satisfaction is met through molds supplied according to the specificity of their needs and inside the agreed deadline; with effective management and skilled labor.

### **Our Goal**

To be known as the market reference for its excellency when it comes to molds for glass containers.

Totem for production appointment.



contact:



Mapping production processes is an essential practice in any company in order to fully realize and optimize all the steps that make up your internal processes. With that in mind, let's take a look at all the steps of a company who owns its own foundry, from a sales order to product shipment.

Client's request (sales order)



Project engineering



Production Planning Control



Raw Materials Acquisition / Foundry



Metalization / Machining



Quality inspections

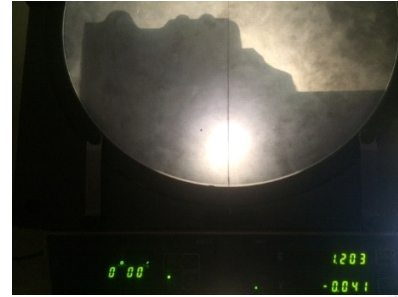


Product shipment



contact:

Pecsil employs only cutting-edge technology in order to supply its products in the same level of quality, if not better, as anyone else in the world.



Dimensional control with the most modern technology in the world market. Schematics control for future consultations.



contact:



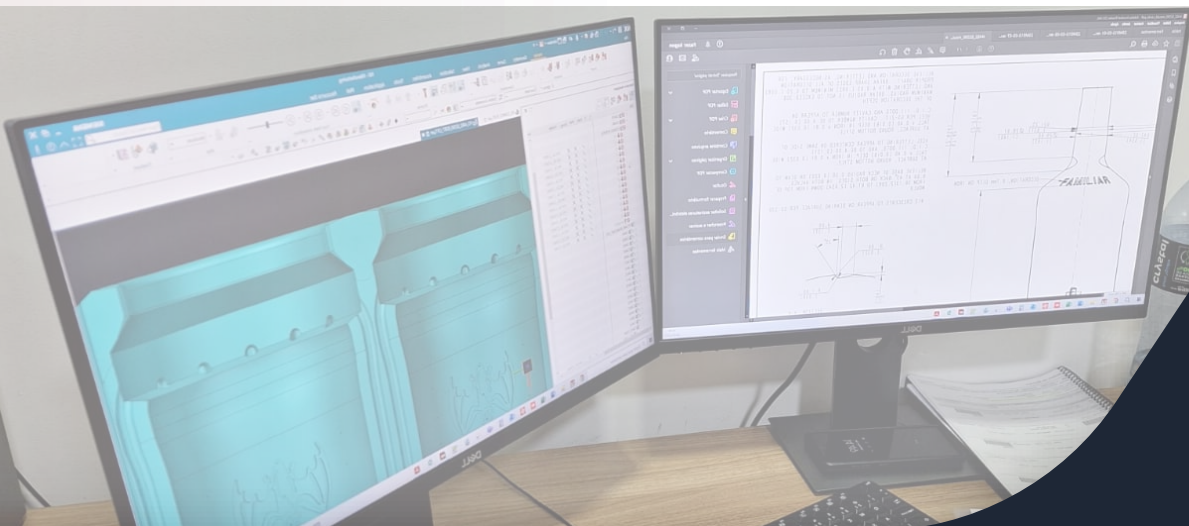
**Commitment to Current and Licensed Software**

In our journey towards excellency, we acknowledge how fundamental it is to work with top notch technology, committing ourselves entirely to the exclusive use of the most recent licensed software in the market, always acquiring those properly and legally. This not only ensures that our engineers work only with the best tools available to them, but also that we are in accordance with every legal or ethical demand regarding intellectual property.



As soon as sales orders are made, our project engineers, alongside our PCP department, gather all data necessary to start developing our 2D and 3D schematics and, after that, initiate our tracking process, strictly following internal protocols.

Nome	Data de modificaç...	Tipo	Tamanho
026-0550-la05_lps0_b1a_nr_f1.stp	01/06/2015 16:09	Arquivo STP	611 KB
026-0550-la05_lps0_b1a_nr_m1#1	15/06/2015 10:38	Cimatron E Docu...	238 KB
026-0550-la05_lps0_b1a_nr_m1#1.elt.tms	29/07/2015 06:59	Arquivo TMS	753 KB
026-0550-la05_lps0_b1a_nr_m1	15/06/2015 10:37	Cimatron E Docu...	237 KB
026-0550-la05_lps0_b1a_nr_m1.stp	01/06/2015 16:09	Arquivo STP	583 KB
026-0550-la05-CAVITY	01/06/2015 10:12	Adobe Acrobat D...	75 KB
026-0550-la05-gr	01/06/2015 10:12	Adobe Acrobat D...	146 KB
026-0550-la05-nr-RJ	01/06/2015 10:12	Adobe Acrobat D...	360 KB



contact:

## TECHNOLOGY

Investments in technology are unnegotiable, since here at Pecsil we are always aiming towards quality, with the most beneficial deadline and with the efficiency the market requires.



Our fleet is ready to fulfill our client's delivery needs fast and carefully. Our team is committed to make sure that each delivery is made with excellency. We appreciate the trust e preference from all our customers. Together, we move towards mutual satisfaction.

## FLEET



contact:

### New factory 2022

In 2022, Pecsil opened its new factory in order to expand our production capability and, therefore, meet market demands, nationally and internationally.

Excellency at customer services comes from good relationships and quality in our products.



contact:



*Molds for Glass*  
**PECSIL**

**SINCE 1973**  
BUILDING OF SUCESS

contact: